

#### FEATURES

- Basic Compressor/Limiter Circuit
- Threshold
- Compression Ratio
- Output Gain
- Preassembled and Pretested
- Socket for THAT4320
- XLR Input/Output Connectors
- Generous Prototyping Area
- Complete Documentation Package  
- Schematic and Assembly Drawing

#### APPLICATIONS

- Verification of 4320 Performance
- Compressor/Limiter Application Evaluation
- Prototyping 4320 Applications
- PCB Layout Reference Design

#### Description

The THAT4320 Demonstration System is a self-contained circuit board that simplifies evaluating the performance of a 4320 Analog Engine® Dynamics Processor IC. It features the 4320 connected in a basic three-control (ratio, threshold and gain) compressor/limiter circuit. An external ( $\pm 5$ ) power supply is required.

Completely assembled and tested, the THAT4320 Demonstration System comes with XLR connectors for signal input and output. A

socket is provided for inserting a THAT 4320S. Power supply connections are made via a 3-pin 0.1-inch-center Molex connector.

To facilitate prototyping specific applications, spare circuit board area is perforated with plated-through holes. This makes the board particularly useful for experimentation.

With a 4320 Demonstration System and standard audio cables, an engineer can start testing the performance of basic 4320 circuitry and begin trying out additional circuit ideas in minutes.

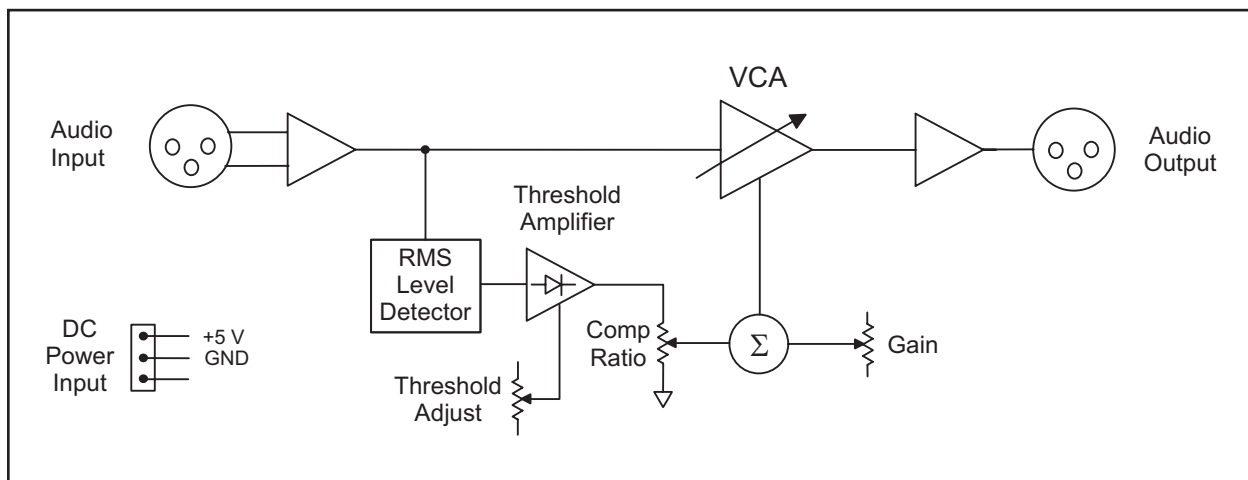


Figure 1. 4320- DEMO-A Block Diagram

**SPECIFICATIONS<sup>1</sup>****Absolute-Maximum Ratings<sup>2</sup>**

Positive Supply Voltage ( $V_{CC}$ )	+18 V	Operating Temperature Range ( $T_{OP}$ )	0 to +70°C
Negative Supply Voltage ( $V_{EE}$ )	$V_{CC} - 18 V$	Storage Temperature Range ( $T_{ST}$ )	0 to +100°C

**Electrical Characteristics<sup>2</sup>**

Parameter	Symbol	Conditions	Min	Typ	Max	Units
Positive Supply Voltage	$V_{CC}$	Referenced to GND	+4.5	—	+15	V
Negative Supply Voltage	$V_{EE}$		$V_{CC}-16$	0	0	V
Gain Range		Internal Control	—	±20	—	dB
Control Voltage Constant		External Control	6.9	6.0	6.1	mV/dB
Supply Current	$I_S$	±5 V Supply	—	5	7.5	mA
Input Impedance, Audio	$Z_{IN}$	Differential	19.6	20	20.4	kΩ
Input Overload	$V_{IN (Max)}$	$V_{CC} = 5 V$		+15	—	dBV
Output Impedance	$Z_{OUT}$	Single-ended	95	100	105	Ω
Minimum Resistive Load	$R_{L MIN}$		2k	—	—	Ω
Maximum Capacitive Load	$C_{L MAX}$		—	—	1	nF
Dimensions				4 x 6 x 1.5		in
Weight				0.4		lb

1. All specifications subject to change without notice
2. Unless otherwise noted,  $T_A=25^\circ\text{C}$ ,  $V_{CC}=+5V$ .

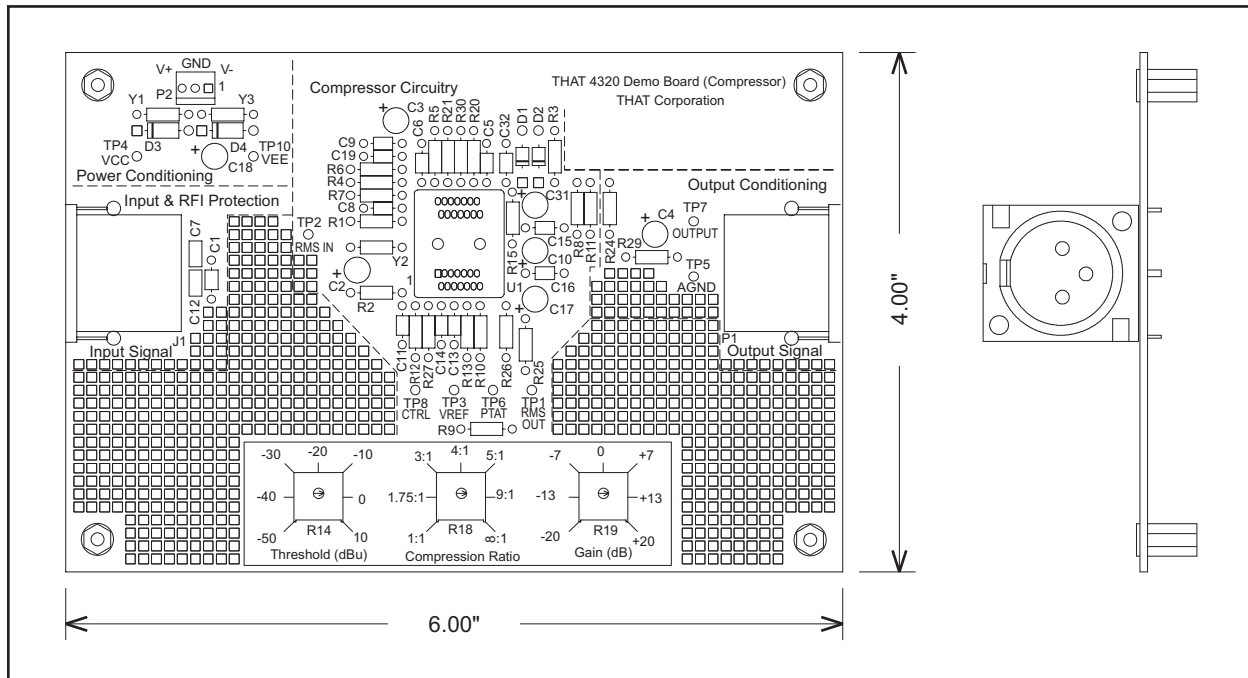


Figure 2. 4320 DEMO-A Outline Drawing

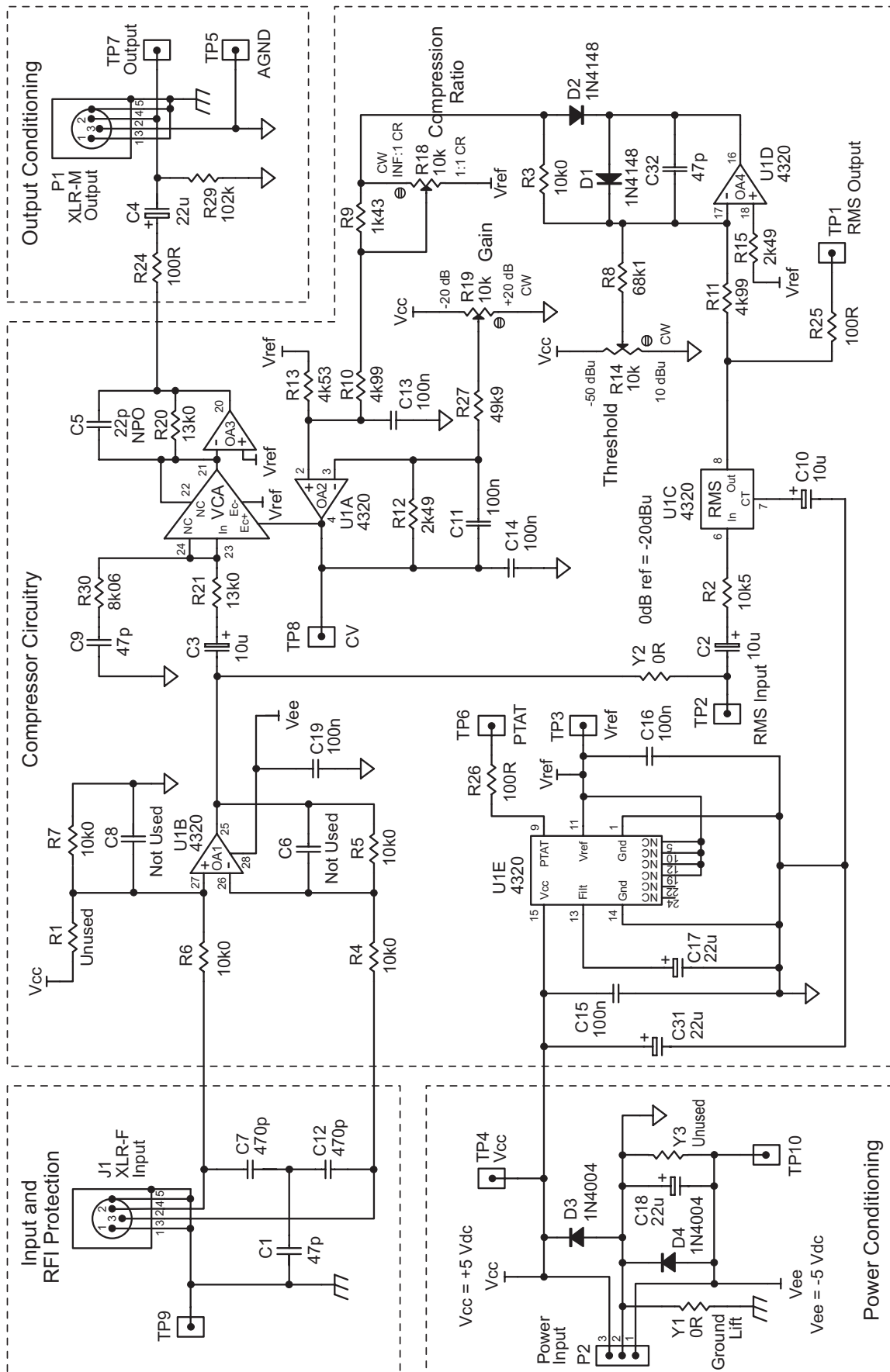


Figure 3. 4320 DEMO-A schematic

## **Notes**